

USER MANUAL

PureKeys Wireless Keyboard

Model: PK-KRF-01

FCC ID:2AELMPKKRF01

- 1) Place 4 pieces AAA batteries (1,5 V alkaline) as indicated in figure 1.
- 2) Start PC and place the USB dongle in a free USB slot of the PC
- 3) It may take up to a few minutes for the drivers to be installed automatically
- 4) This product is plug and play compatible with Windows PC's, no additional drivers needed.

The elastomer cover can be cleaned with hospital grade disinfectants including alcohol 80%. Before starting the cleaning process press the CLEAN button until the light goes on. After placing the keyboard in cleaning mode it can be cleaned and the activation of any key does not result in unwanted input. After pressing the CLEAN button again the keyboard will become active and ready for use.

Purekeys declares that this product is in accordance with essential requirements and other relevant terms of the European regulation 2004/108/EC.

The micro USB port behind the left plug is only for factory debugging, not for customer use.

This device complies with Part 15 of the FCC rules. Operation is subject to the following two conditions:

- 1) this device may not cause harmful interference, and
- 2) this device must accept any interference received, including interference that may cause undesired operation.

Note: This equipment has been tested and found to comply with the limits for a Class B digital device, pursuant to part 15 of the FCC Rules. These limits are designed to provide reasonable protection against harmful interference in a residential installation. This equipment generates, uses and can radiate radio frequency energy and, if not installed and used in accordance with the instructions, may cause harmful interference to radio communications. However, there is no guarantee that interference will not occur in a particular installation. If this equipment does cause harmful interference to radio or television reception, which can be determined by turning the equipment off and on, the user is encouraged to try to correct the interference by one or more of the following measures:

- Reorient or relocate the receiving antenna.
 - Increase the separation between the equipment and receiver.
 - Connect the equipment into an outlet on a circuit different from that to which the receiver is connected.
 - Consult the dealer or an experienced radio/TV technician for help.
- changes or modifications not expressly approved by the party responsible for compliance could void your authority to operate the equipment.

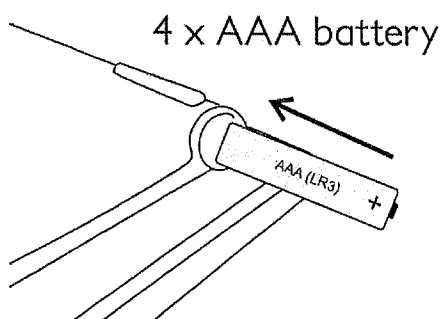
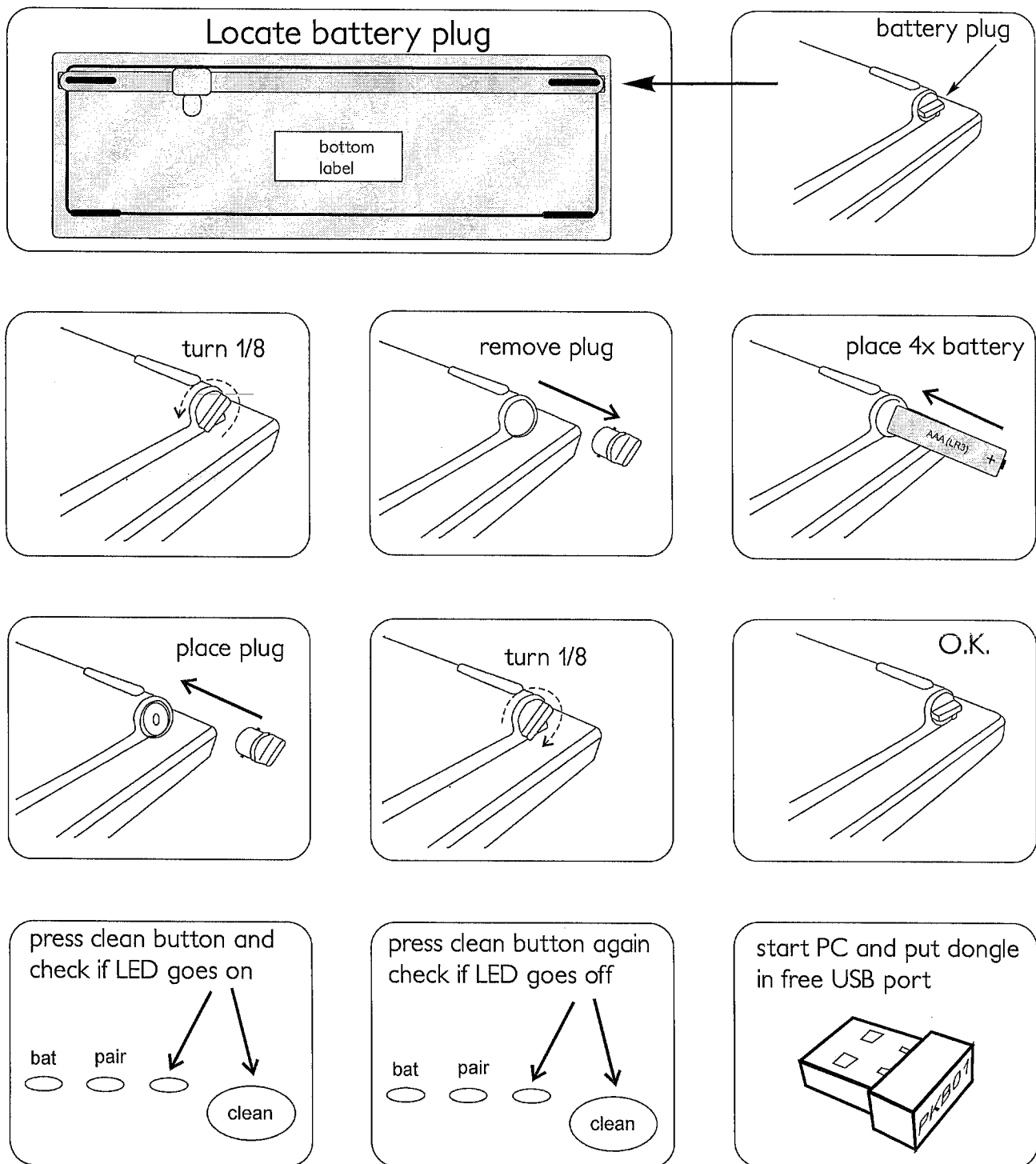


fig.1

Purekeys wireless keyboard quick installation guide



Installation will start automatically and may take 1 minute.
If any problems occur read user manual or check FAQ on:

WWW.PUREKEYS.COM

dental sør
HELE VEIEN

Postboks 901 - 4509 Mandal
Tlf. 38 27 88 88 - www.dentalnet.no

Doc.15 ver.1.01